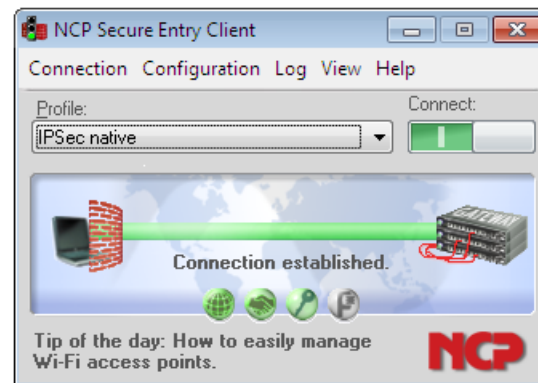


## Next Generation Network Access Technology

**Versatile VPN Client for 32-/64-bit Windows (Windows 7, Windows Vista, Windows XP) – Simple and highly secure Remote Access via Internet.**

- ▶ **Compatible with VPN gateways (IPsec standard)**
- ▶ **Import of third party configuration files**
- ▶ **Integrated, dynamic personal firewall**
- ▶ **Fallback IPsec → HTTPS (VPN Path Finder Technology)**
- ▶ **Strong authentication**
- ▶ **Budget Manager for cost control**
- ▶ **Integrated support of Mobile Connect Cards**
- ▶ **Integration of all security and communication technologies for universal remote access**
- ▶ **Free of charge 30 day full version**



### Universality and Communication

The NCP Secure Entry Client for Windows 32/64 bit operating systems is a communication software product for universal implementation in any remote access VPN environment. The teleworker works transparently and securely at any location (mobile or stationary) in the same manner as he works at his office within his corporate environment. Highly secure data connections to VPN gateways from all well-known suppliers can be established using IPsec standards. Independent of Microsoft remote data transmission dialer, the connection can be set up via any type of network (wire networks, wireless networks, LAN, Wi-Fi and internet). Clients can be used on 32-/64-bit versions of Windows XP, Windows Vista and Windows 7 to access company data networks and applications from any location. Even if the access point or the IP address changes, Wi-Fi roaming or IPsec roaming maintains the VPN connection. Even behind firewalls, whose settings always prevent IPsec data connections, the NCP Path Finder technology allows for remote access.

### Security

The NCP Secure Entry Client offers extensive security mechanisms that prevent attacks in any remote access environment. Hence, it offers comprehensive security of both, the end device and the corporate network. This is true, even at hotspots during the logon and logoff process to the Wi-Fi network. In addition to data encryption the most important integrated components are: a dynamic personal firewall, support of OTP (One-Time Password tokens) and certificates in a PKI (Public Key Infrastructure). Use the personal firewall to define policies for: Ports, IP addresses and segments, as well as applications. An additional safety criterion is "Friendly Net Detection" (location awareness), i.e. automatic detection of secure and non-secure networks.

The appropriate firewall rules are activated or deactivated depending on whether a friendly net is detected. In contrast to common firewalls, the NCP firewall is already activated at system startup. All Client configurations can be locked by the administrator which means, the user cannot change the locked configurations.

### Usability and Profitability

"Easy-to-use" for both, user and administrator - the NCP Secure Entry Client offers simple installation and simple operation. A graphical, intuitive user interface provides information on all connection and security states. Detailed log information paves the road for effective assistant from the help desk. The feature "automatic media detection" automatically selects the fastest communication medium available. A configuration wizard enables easy set up of connection profiles. Integrated support of Mobile Connect Cards for 3G, GPRS, and Wi-Fi means that additional installation of the user interface supplied by the card manufacturers is not necessary. Domain logon, too, is of course highly secure and as convenient and familiar as it is in the local network. The Client Monitor can be tailored to include your company name or support information. Usability also means cost reduction through less time spent trainings, less documentation and fewer support cases. VPN tunnels can be configured to be established automatically.

An integrated budget manager guarantees cost transparency because a volume or time budget or the use of a certain provider can be set and monitored.

Technical data

<b>Operating Systems</b>	Windows (32-bit): Windows 7, Windows Vista, Windows XP, Windows 2000 (is canceled from V.9.2) Windows (64-bit): Windows 7, Windows Vista, Windows XP
<b>Security Features</b>	The Entry Client supports all IPsec standards in accordance with RFC
<b>Personal Firewall</b>	Stateful Packet Inspection; IP-NAT (Network Address Translation); Friendly Net Detection (analysis of: current network address, IP address and MAC address of the DHCP server); secure hotspot logon; differentiated filter rules relative to: protocols, ports, applications and addresses, LAN adapter protection
<b>Virtual Private Networking</b>	IPsec (Layer 3 Tunneling), conform to RFC; IPsec proposals can be determined through the IPsec gateway (IKE, IPsec Phase 2); Event log; communication only in the tunnel; MTU size fragmentation and reassembly, DPD, NAT-Traversal (NAT-T); IPsec tunnel mode
<b>Encryption</b>	Symmetric processes: AES 128,192,256 bits; Blowfish 128,448 bits; Triple-DES 112,168 bits; dynamic processes for key exchange: RSA to 2048 bits; seamless rekeying (PFS); hash algorithms: SHA-256, SHA-384, SHA-512, MD5, DH group 1,2,5,14
<b>Authentication Processes</b>	IKE (Aggressive mode and Main Mode), Quick Mode; XAUTH for extended user authentication; IKE config mode for dynamic assignment of a virtual address from the internal address pool (private IP); PFS; PAP, CHAP, MS CHAP V.2; IEEE 802.1x: EAP-MD5 (Extensible Authentication Protocol): Extended authentication relative to switches and access points (Layer 2); EAP-TLS (Extensible Authentication Protocol - Transport Layer Security): Extended authentication relative to switches and access points on the basis of certificates (Layer 2); support of certificates in a PKI: Soft certificates, smartcards, and USB tokens: Multi Certificate Configurations; Pre-shared secrets, one-time passwords, and challenge response systems; RSA SecurID ready.
<b>Strong Authentication - Standards</b>	X.509 v.3 Standard; Entrust Ready PKCS#11 interface for encryption tokens (USB and smartcards); smartcard operating systems: TCOS 1.2, 2.0 and 3.0; smart card reader interfaces: PC/SC, CT-API; PKCS#12 interface for private keys in soft certificates; PIN policy; administrative specification for PIN entry in any level of complexity; revocation: EPRL (End-entity Public-key Certificate Revocation List, formerly <i>CRL</i> ), CARL (Certification Authority Revocation List, formerly <i>ARL</i> ), OCSP.
<b>Networking Features</b>	LAN emulation: Ethernet adapter with NDIS interface
<b>Network Protocol</b>	IP
<b>Dialers</b>	NCP Secure Dialer, Microsoft RAS Dialer (for ISP dial-in via dial-in script) connection manager for international dial-in via GoRemote (formerly <i>GRIQ</i> ), UuNet, Infonet, MCI (on request)
<b>VPN Path Finder</b>	NCP Path Finder Technology: Fallback IPsec/ HTTPS (port 443) if port 500 respectively UDP encapsulation is no possible (prerequisite: NCP Secure Enterprise Server V 8.0 is required)
<b>IP Address Allocation</b>	DHCP (Dynamic Host Control Protocol), DNS: Dial-in to the central gateway with changing public IP addresses through IP address query via DNS server
<b>Transmission Media</b>	Internet, xDSL, LAN, WI-FI, GSM (inkl. HSCSD), GPRS, UMTS, HSDPA, PSTN, ISDN,
<b>Line management</b>	DPD with configurable time interval; Short Hold Mode; Wi-Fi roaming (handover); channel bundling (dynamic in ISDN) with freely configurable threshold value; timeout (controlled by time and charges); budget manager (administration of connection time and/or -volume for GPRS/ 3G and Wi-Fi, in case of GPRS/ 3G separated administration of roaming abroad).
<b>Data Compression</b>	Stac (lzs), deflate
<b>Additional Features</b>	UDP encapsulation, WISPR-support, IPsec-Roaming, Wi-Fi roaming, import of the file formats: *.ini, *.pcf, *.wgx und *.spd.
<b>Point-to-Point Protocols</b>	PPP over ISDN, PPP over GSM, PPP over PSTN, PPP over Ethernet; LCP, IPCP, MLP, CCP, PAP, CHAP, ECP
<b>Internet Society RFCs and Drafts</b>	RFC 2401 –2409 (IPsec), RFC 3947 (NAT-T negotiations), RFC 3948 (UDP encapsulation), IP security architecture, ESP, HMAC-MD5-96, HMAC-SHA-1-96, ISAKMP/Oakley, IKE, XAUTH, IKECFG, DPD, NAT Traversal (NAT-T), UDP encapsulation, IPCOMP
<b>Client Monitor Intuitive, Graphical User Interface</b>	Multilingual (German, English, French, Dutch); Client Info Center; configuration, connection management and monitoring, connection statistics, log-files (color displayed, easy copy&paste-function); trace tool for error diagnosis; traffic light icon for display of connection status; integrated support of Mobile Connect Cards (PCMCIA, embedded); the Client Monitor can be tailored to include your company name or support information; password protected configuration management and profile management, configuration parameter lock

Option: central management and endpoint security (upgrade NCP Secure Enterprise Client)

More information on NCP Secure Entry Client is available on the Internet at:

<http://www.ncp-e.com/en/solutions/vpn-products/universal-ipsec-client.html>

You can test a free, 30-day full version of Secure Entry Client (Win32/64) here: <http://www.ncp-e.com/en/downloads/software.html>