

Activation and Update Entry CE Client

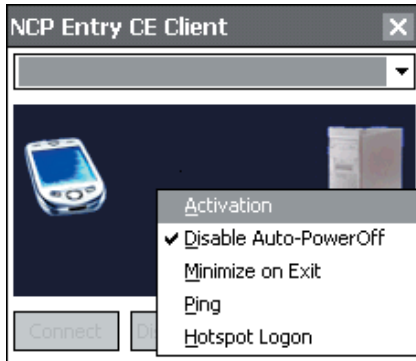
NCP

SECURE COMMUNICATIONS ■

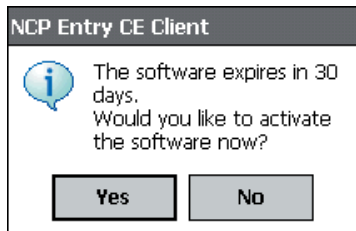


1. Licensing via Activation Dialog

The client software is always installed as a test version. After a new or pre-installation, the client needs to be activated. An older version which has been upgraded, will be during the upgrade process be reset to a test version and so too requires to be activated within 30 days.



The activation dialog is opened using the popup menu “Activation” (see figure on the left) or by pressing on “Yes” when the message box is displayed after the start of the NCP client service.



The time remaining until software activation is required, i.e. the validity period of the test version, is displayed in the license information (figure left below). In order to use a full version with no time limitations, the software must be released version shown in the activation dialog with the license key and the serial number that you have received.

The activation dialog can be opened using the arrow button in the license information message (figure left below).



The license data can be entered either online or offline via a wizard.

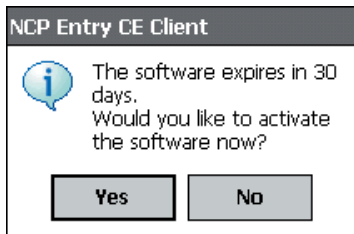
In the offline variant, a file that is generated after entering the license key and serial number must be sent to the NCP activation server, and the activation key that is then displayed on the website must be noted. This activation key can be entered in the licensing window of the Monitor menu at a later point in time.

In the online variant, an assistant forwards the licensing data to the activation server immediately after entry and thus allowing the software to immediately be released.

1.1 Test Version Validity Period

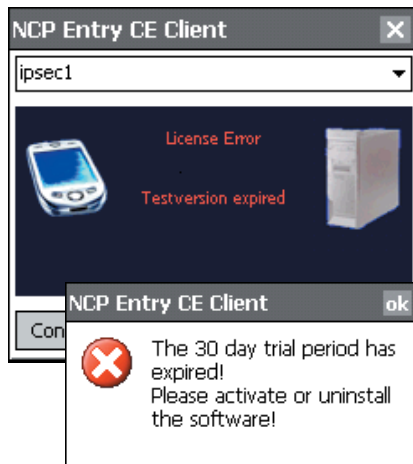


The test version is valid for 30 days. Without software activation or licensing it will no longer be possible to setup a connection after this 30-day period expires.



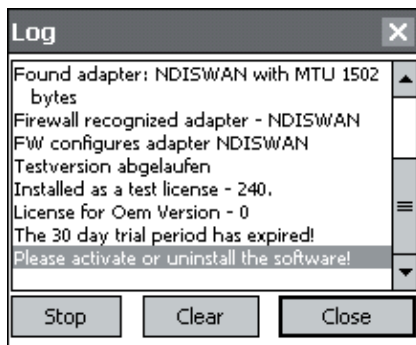
After installation, each time the software is started the validity period will be shown in the popup window once a day.

The software can be used during the trial period when clicking “No” in the activation dialog (shown on the left side).



When the trial period has expired the software must be either activated or de-installed.

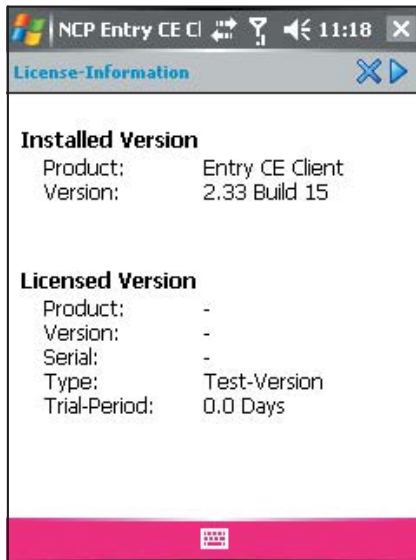
To activate, start the activation dialog by pressing the “ok”-button.



When the trial period has expired a message is also displayed in the log file.

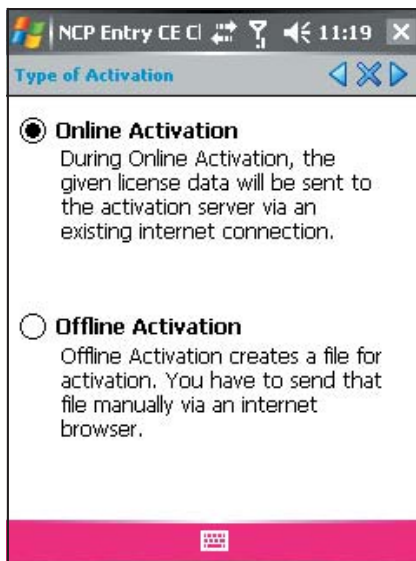
1.2 Software Activation

When the test phase has expired, the software must be either activated or de-installed. To activate, select the menu option “Activation” in the popup menu.



Here you can see which software version you have and how the software is licensed, i.e. you can see that the test version has expired and that the software has not yet been activated/licensed.

To activate click the arrow button right above.



In the window that appears, select whether you wish activate the client online or offline by selecting either online activation or offline activation respectively.

In the offline variant, a file that is generated after entering the license key and serial number must be sent to the NCP activation server, and the activation key that is then displayed on the website must be noted. In the online variant, an assistant forwards the licensing data to the web server immediately after entry and thus the software is immediately released.

After selecting the type of activation the license data is to be entered in the appropriate fields.

Click on the arrow button on the right to continue.

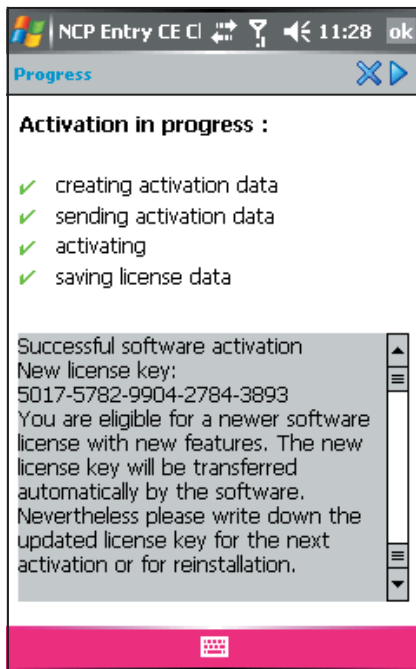
■ Online Variant

With the online variant the license data will be transmitted to the NCP Activation Server via an Internet connection. This Internet connection can either be established via the Data Communications Dialer (via PocketPC Connection Manager or Modem/Mobile) or via the Entry Client.

The activation assistant requires a connection to already be established.

Ensure that port 80 is permitted (for HTTP) if the firewall is activated. (If a proxy server has been configured in the operating system enter the address data.)

Click on the arrow button on the right to continue.



The software is activated automatically in the specified sequence.

As soon as the Activation Server detects that you are entitled to a newer software license and that the license key agrees with the installed software, then with online activation the new license key will be transferred automatically (license update), and the new features of the software will be available to use.

Please write down the update key for the next activation or for reinstallation.



Upon completion of the activation process, the software version number may differ from the licensed version number if the license is valid only for an older version.

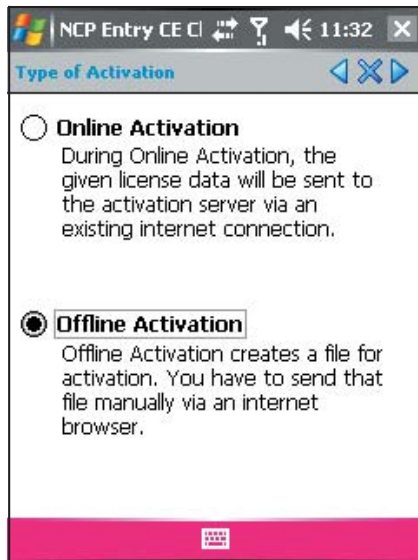
■ Offline Variant

The offline variant is executed in two steps. In the first step a file is generated after entering the license key and serial number, and is then sent to the NCP activation server.

The URL is:

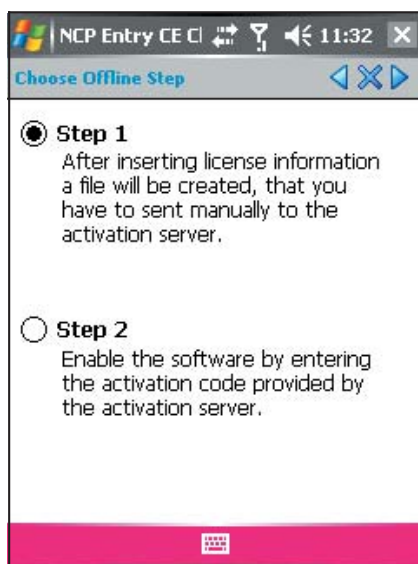
`http://www.ncp-e.com/en/support/software-activation.html`

An activation key will be shown on the web site, and you must note this number in order to enter the license key in the licensing window of the activation dialog in a second step. (Which can also be executed at a later point in time.)



The offline variant can be initiated via the activation dialog and can be selected in the first window.

Click on the arrow button on the right.



In the second window of the activation assistant, the two steps of the offline activation process are explained. The first step, creation of the activation file, is selected automatically.

Click on the arrow button on the right to continue.

NCP Entry CE Client 11:19

License-Data

License Key :

2784 - 5258 - 3893 - 2989 -

Serial Number :

398972

In the following window enter the license data and click on the arrow button...

NCP Entry CE Client 11:33

Save

Please enter a filename for saving the activation data.

\\NcpOnlAct.dat

Enter name and path for the activation file.

Click on the arrow button...

NCP Entry CE Client 11:33 ok

Progress

Creating Activation-File :

- ✓ verifying license data
- ✓ creating activation data
- ✓ saving activation data

Saved activation data as:
"\\NcpOnlAct.dat".

Now an activation file is created and this file must be transferred to the Activation Server.

Partner Area
 Knowledgebase
 IPSec compatibility
 CE compatibility
 Software Activation
Offline Activation
 FAQ on Activation
 Update Key
 Trainings
 Feedback

Brochures
 Newsletters
 Feedback

Offline software activation

Please copy the content of the activation file that is generated by the NCP Secure Client (**offline activation, step 1**) into the text field that is provided for it. Click on the "Send" button to transmit the file to our activation server.

Alternatively you can also upload the activation file directly to the activation server. To do this, click on the "Browse..." button and select the file with the activation data. Click on the "Send" button to transmit the data to our activation server.

After sending the activation data, or the file, you will receive an **activation code**. Continue the software activation process in the NCP Entry Client by opening the monitor menu (Help -> License info and activation -> Offline activation). Under **step 2** the **activation code** displayed below will be queried. This step concludes the software activation process.

Content of the activation file:



Filename :

C:\WINNT\ncple\ActiData.txt



high security remote access

There are two ways to transfer the activation file to the Activation Server. Either copy the content of the activation file with Copy & Paste, after you have opened the activation file with the Notepad (ASCII editor), into the window that is open on the web site, or click on the "Browse" button and select the activation file. Click on "Send"!

Then the activation code will be generated and displayed on the web site. Note the activation code and continue the activation process under the menu option "Help" / License data and activation", by executing the second step of the activation in the offline variant.



SECURE COMMUNICATIONS

[Home](#) [Company](#) [Security](#) [Products](#) [Sales](#) [Services](#) [Press](#)[Partner Area](#)[Knowledgebase](#)[IPSec compatibility](#)[CE compatibility](#)[Software Activation](#)[Offline Activation](#)[FAQ on Activation](#)[Update Key](#)[Trainings](#)[Feedback](#)

New Activation Code

Activation Code: TITXTE

New License Key: 3005

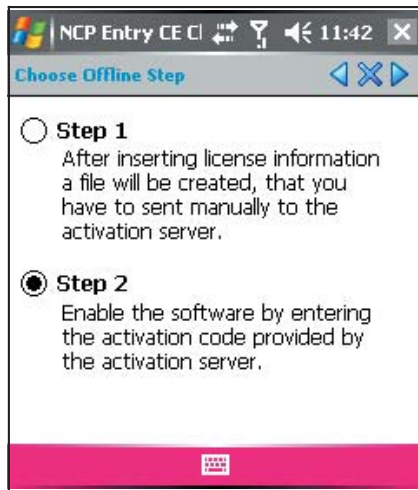
The Activation Code was successfully generated. Our system, however, has detected that you are eligible for a newer software license. In order to use the latest features, please, finish the activation procedure and use the License Key above.

In order to finish the software activation, please, note the activation code above and proceed with **Offline Activation** under the menu item "Help → License info and activation" **Step 2**. After completing the activation enter the new License Key under the same menu item "Help → License info and activation".

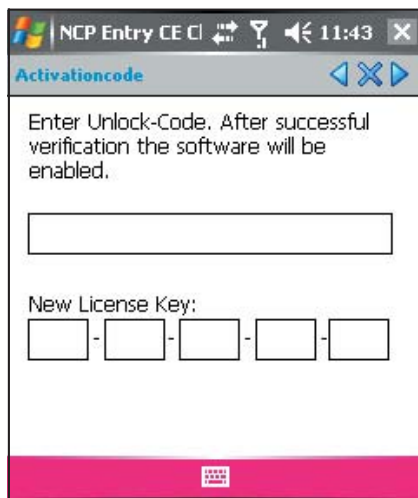
E-Mail: support@ncp.de

[high security remote access](#)

If the Activation Server detects that you are entitled to a newer software license and that the license key agrees with the installed software, then with the online activation the new license key will be displayed automatically. If you want to activate the new features then note the new license key, conclude the activation process, and then use the new license key.



The second step of the offline variant is triggered via the Monitor menu “Help” “License data and activation”. After the offline variant has been selected, select the second step.



A window will open where you can enter the activation code. After you have entered the activation code you can click on the arrow button.



Offline activation is completed with the following window.



The license data is verified and then transferred.

Finish the activation dialog when the verification has been concluded.

Upon completion of the activation process, you will see that you now have correctly activated full version in the window for the license data.

The software version number may differ from the licensed version number if the license is valid only for an older version.

1.3 Operating System on the mobile device

Windows Mobile 6, along with the other Windows Mobile / Win CE versions is supported by NCP Entry CE Client v. 2.33.



To install on Windows Mobile 6, it is required to have a licensed v. 2.33 (or higher). This software cannot be operated under an older license key.

It is a prerequisite to have at least a version 2.3 to activate the Client software under Windows Mobile 6. If a no-charge update to version 2.3 is available to you, then you will receive the respective license key when the software is activated. Otherwise, updates to version 2.3 may be purchased in the NCP E-store or purchased from your local NCP dealer.