

# Activation

NCP Exclusive Entry Client

## Functional Description

© NCP engineering GmbH 2018



Next Generation Network  
Access Technology

[www.ncp-e.com](http://www.ncp-e.com)

# Activation

## NCP Exclusive Entry Client



### Contact

For more information or questions about NCP products and services:

#### Germany

NCP engineering GmbH  
Dombühlerstraße 2  
D-90449 Nürnberg  
Tel.: +49 (911) 9968 0  
Homepage: <http://www.ncp-e.com>  
Mail: [info@ncp-e.com](mailto:info@ncp-e.com)

#### E-Mail Support:

[support@ncp-e.com](mailto:support@ncp-e.com) (german)  
[helpdesk@ncp-e.com](mailto:helpdesk@ncp-e.com) (english)

#### Support Hotline

0900 / 1 99 68 00  
(only available from Germany, 80 Cent / per minute)  
Our support times are from monday to friday from 08:00 am to 17:00 pm.

For a support request we need the following information:

- exact product name
- serial number
- version number
- precise description of the problem
- any error message(s)

#### Contact USA, North American HQ

NCP engineering, Inc.  
678 Georgia Ave.  
Sunnyvale, CA 94085  
Phone: +1 (650) 316-6273

#### East Coast Office

601 Cleveland Street, Suite 501-25  
Clearwater, FL 33755

While considerable care has been taken in the preparation and publication of this manual, errors in content, typo-graphical or otherwise, may occur. If you have any comments or recommendations concerning the accuracy, then please contact NCP. NCP makes no representations or warranties with respect to the contents or use of this manual, and explicitly disclaims all expressed or implied warranties of merchantability or suitability of use for any particular purpose.

Furthermore, NCP reserves the right to revise this publication and to make amendments to the contents, at any time, without obligation to notify any person or entity of such revisions or changes. This manual is the sole property of NCP and may not be copied for resale, commercial distribution or translated to another language without the express written permission of NCP engineering GmbH. All trademarks or registered trademarks appearing in this manual belong to their respective owners.

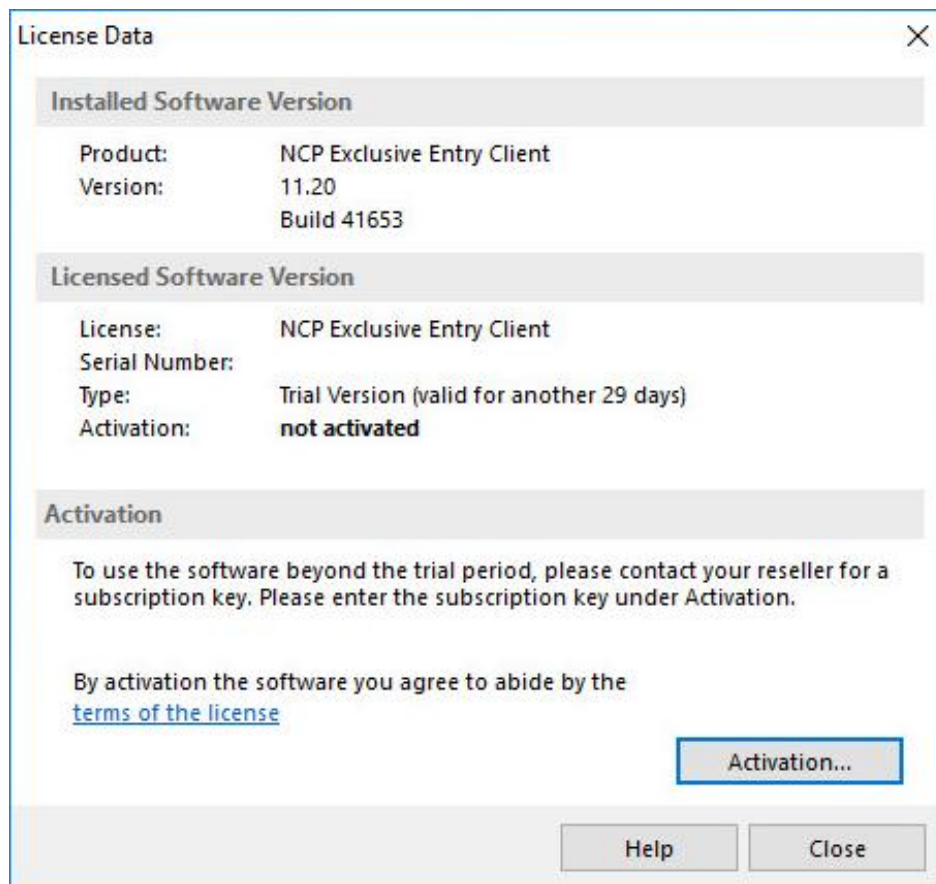
# Activation

## NCP Exclusive Entry Client



A subscription license for the NCP Exclusive Entry Client can be obtained from an NCP reseller for one, two or three years. The term starts in the client from the day the license is activated after entering the subscription key, consisting of the license key and serial number, which you received when you purchased this product.

To activate, select the menu item of the same name in the main menu "Help". This opens a window with the current license data. (Fig. below)



The version of the product is displayed, operated in a non-activated trial version that is valid for a maximum of 30 days. To activate, click on the button of the same name. (see fig. above)

*next page →*

# Activation

## NCP Exclusive Entry Client



Now enter the subscription key consisting of license key and serial number. (Fig. below)

Software Activation Wizard

License Data  
Please insert license data

Please enter the following data for the NCP Exclusive Entry Client Software.

License Key:  
1234 - 5 - - - -

Serial Number:  
\_\_\_\_\_

< Back   Next >   Cancel

After entering the license data, click on "Next" to determine the connection to the Internet.

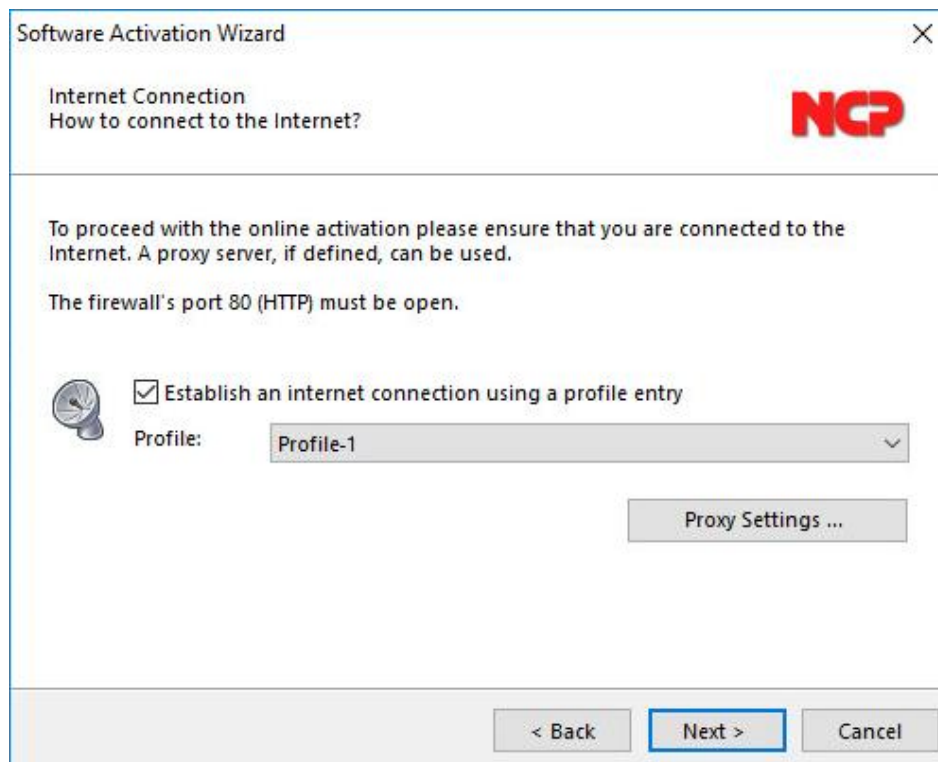
*next page →*

# Activation

## NCP Exclusive Entry Client



If you want to establish a connection to the Internet with the client software, you must first create a suitable profile that can be selected in the following window (fig. below). Make sure that the port 80 (for HTTP) is enabled when the firewall is activated. (If a proxy server is configured in the operating system, its settings can be applied after clicking on "Proxy Settings".) After the profile has been selected, click on "Next". The Internet connection will be established automatically after the desired profile (in figure below: Profile-1) has been selected.



Alternatively, the connection can also be established via the browser. Again, make sure that the proxy settings of the system are adopted.

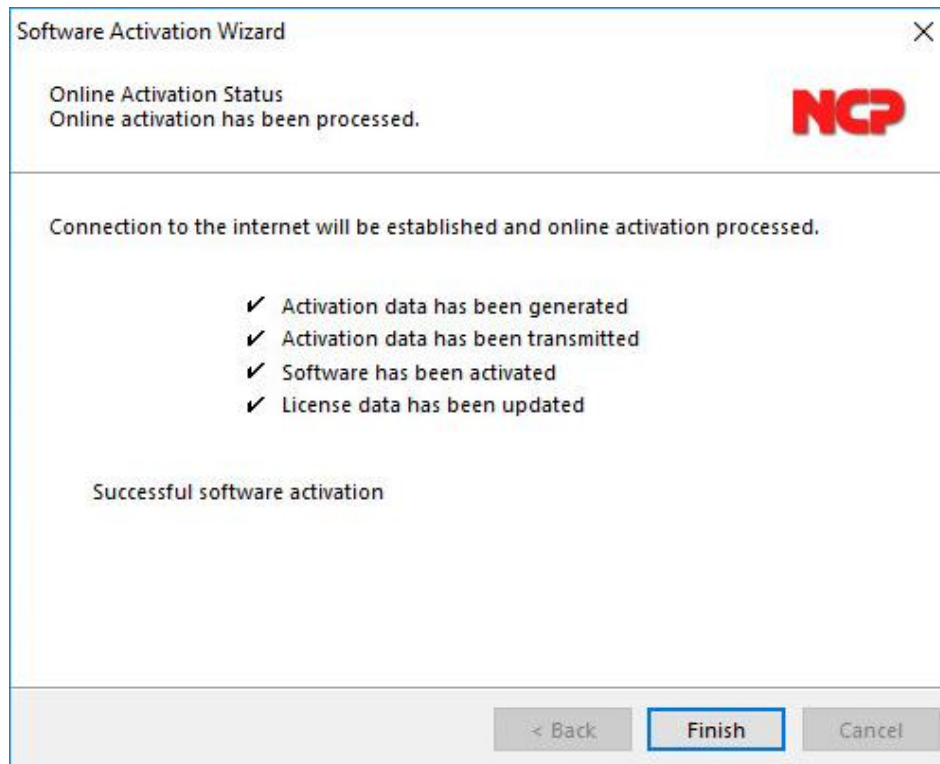
*next page →*

# Activation

NCP Exclusive Entry Client



After clicking on "Next", the software is activated in the order shown below.



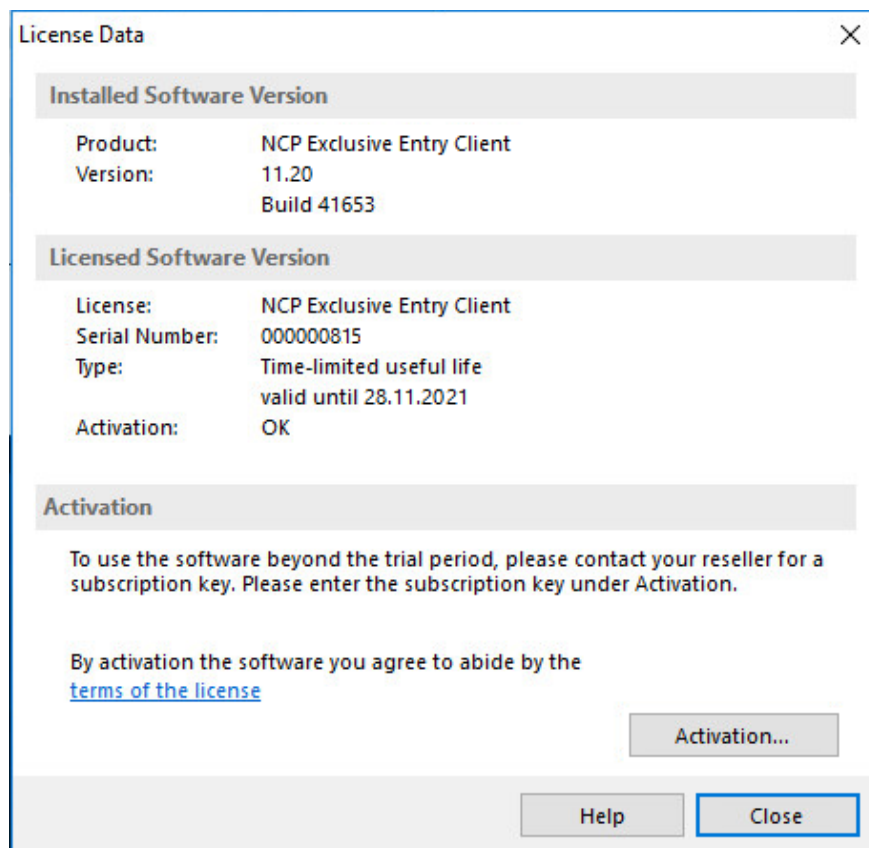
*next page →*

# Activation

## NCP Exclusive Entry Client



By clicking on "Finish" the licensed software version with serial number and limited useful life of one, two or three years is displayed. (Fig. below)



Sixty days before the expiration of the subscription, i.e. the limited useful life, you will be alerted at the bottom of the GUI by indicating the remaining days of use. Fourteen days before the subscription expires, these notes will be displayed in red. In addition, when the client is started, a Windows message appears above the tray icon.

### Extension of the service life

To continue using the software for the remainder of the period, obtain an extension key from your reseller. If the serial number is the same, enter the new license key for additional one, two or three years in the manner described above.

### Use on another computer

If the software with subscription license is to be used on a new computer, contact the NCP reseller or support.